



Help Them Shine From the Inside Out

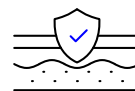
Proven Ways to Enhance Skin and Coat Quality

When included as part of a complete and balanced diet, clinical research shows that Zinpro® Performance Minerals® support:

- Quick Hair Re-growth
- Strong Hair Cuticle and Shaft Structure
- Vibrantly Colored Coats
- Skin Protection

Feel Good. Look Even Better.

There are conventional trace minerals and then there's Zinpro Performance Minerals. Our patented mineral technology moves beyond conventional mineral options to deliver superior absorption, helping pets shine from the inside out.



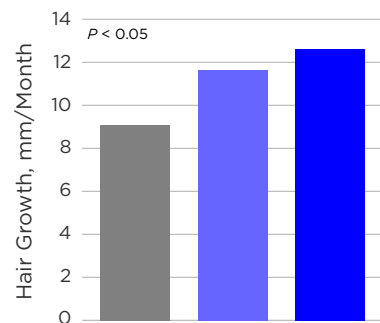
38% ↑

Faster Growth

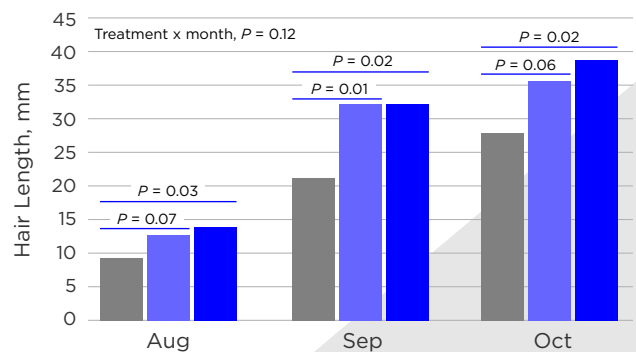
40% ↑

Hair Length

Hair Growth



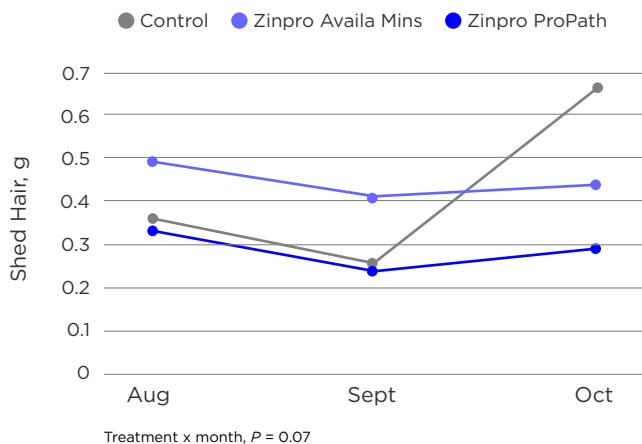
Hair Length



● Control ● Zinpro® Availa® Mins ● Zinpro® ProPath®

zinpro.com

Shed Hair Response



Dogs fed food containing Zinpro minerals showed an atypical seasonal shedding pattern.

A DIFFERENCE YOU CAN SEE: IMPROVED PET SKIN AND COAT HEALTH

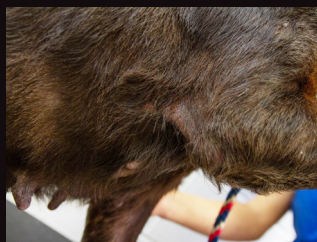
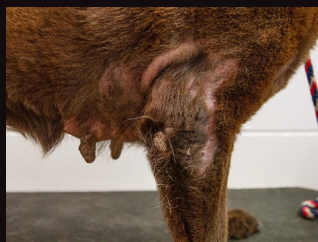
Before



After



Shown at left: Hershey is a 9-year-old Chocolate Labrador Retriever that has a history of dermatosis & poor hair coat color. After 12 weeks of supplementation, Hershey showed significant improvement in skin and coat health.



Before



After



Shown above: Honey, a 12-year-old golden retriever, had developed a faded lighter coat color around her face and nose. After 12 weeks on supplementation Honey showed improvement in coat color and skin health.



For more information:
contact your Zinpro sales
representative or visit
zinpropet.com

Zinpro ProPath Performance Mineral Recommended Rates for Canine Diets

Zn

100 ppm

Mn

25 ppm

Fe

45 ppm

Cu

7 ppm